



Collaboration/co-location across sectors

Adrian Topham



Offshore Co-Location Forum objectives

...to provide strategic coordination of colocation research and activity on the nation's seabed and to maximise the potential of the seabed for both offshore wind and carbon capture and storage

Identify the key
challenges and
opportunities

Facilitate collaborative
working

Focus on solutions
and identify a clear
set of
required actions

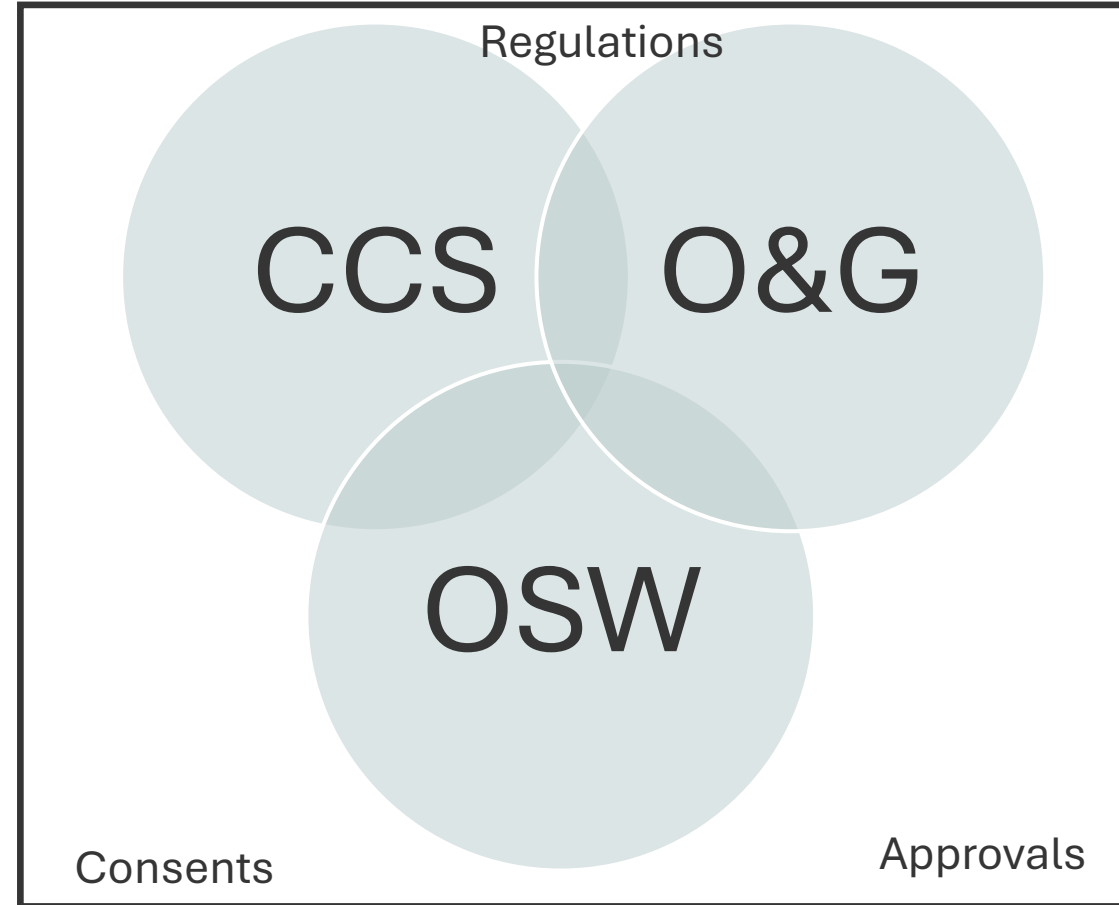
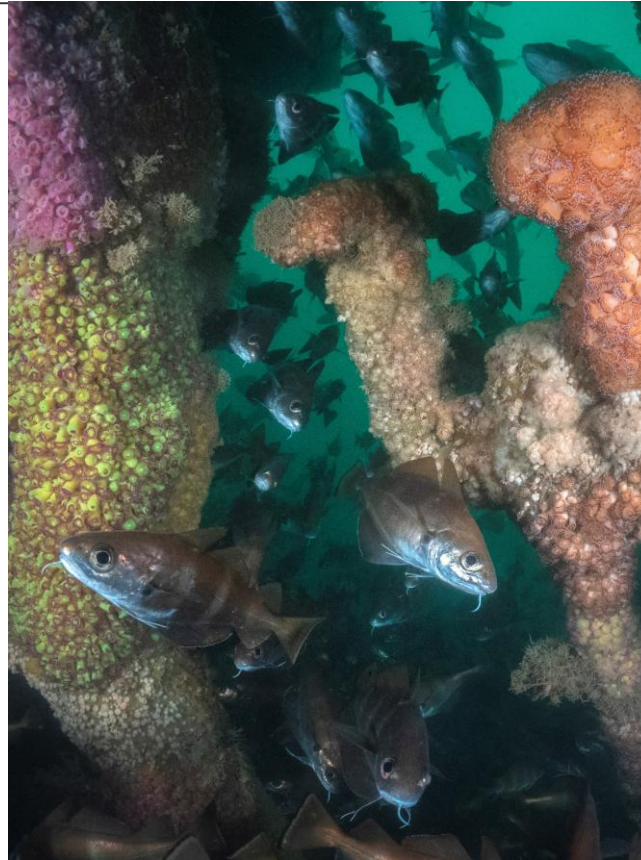
Identify innovative
solutions

Engage stakeholders

<https://www.thecrownestate.co.uk/our-business/marine/osw-and-ccus-co-location-forum>

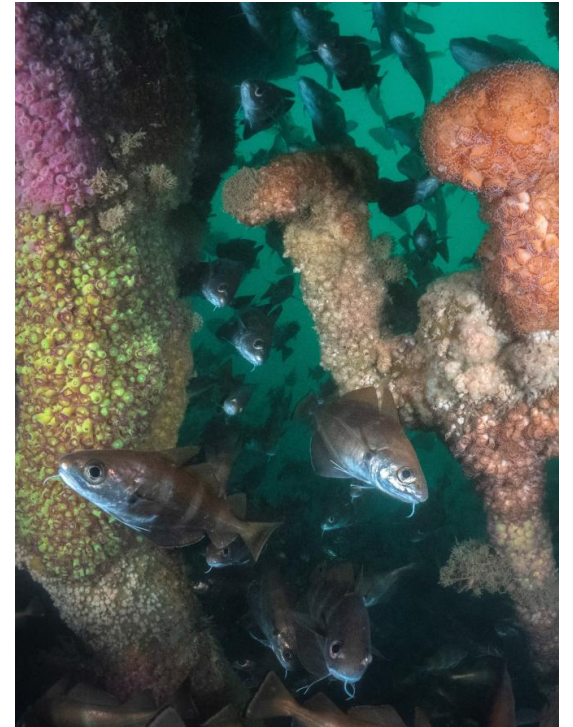
Project Anemone

engaging with relevant stakeholders to create a common understanding of the regulatory and approval pathways for collocated projects, and the operational opportunities and challenges associated with collocation



Managing Offshore Overlap Earlier and Better

- Offshore overlap between **Offshore Wind, Carbon Storage and Oil & Gas** is increasing
- Consequently UK seabed demand for space is increasing
- Project Anemone found that:
 - Colocation challenges are rarely driven by single technical issues
 - Most risks arise from:
 - misaligned project timelines
 - limited early visibility of overlap
 - unclear roles across leasing, licensing and consenting
 - *When* decisions are taken often matters as much as *where*



Earlier Coordination to Reduce Risk

1. Earlier visibility reduces cost and risk

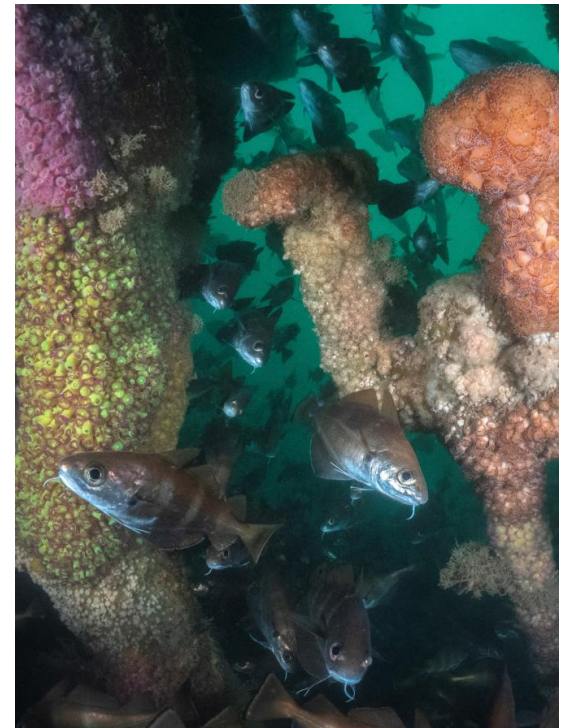
- Most colocation challenges are **manageable if identified early**
- Greatest value comes before projects are locked into designs, consents, financing commitments

2. Process coordination beats technical re-engineering

- Near-term gains come from clearer governance, earlier engagement, improved information sharing

3. Practical, implementable solutions

- **10 potential solutions** identified and assessed
 - Focused on improving existing processes, not creating new regimes
 - High alignment across OW, CS and O&G on what will make the biggest difference





WHAT IT IS

The Routemap will become The Crown Estate's strategic delivery plan for the seabed and coastline around England, Wales and Northern Ireland that can dynamically model and map the potential use scenarios over coming decades.



The Marine Delivery Routemap

WHAT IT WILL DO:

- Map out best use of the seabed and coastline, showing what energy, infrastructure and nature investments might take place and when, and securing the best outcomes for the economy, environment and society.
- Speed up clean energy projects and critical infrastructure by enabling planning for what we need to do to accelerate delivery - for example, environmental surveys and grid connections.
- Spark investment in UK supply chain opportunities so communities can plan, for example through developing local skills.

WHAT IT CONTAINS:

- A digital and interactive map for the seabed and coastline built on our world class spatial mapping and digital expertise.
- A long-term delivery plan that identifies when and where key infrastructure and supply chain investments are needed
- A shared evidence base for the seabed and coastline that reflects existing policies and regulation and is informed and used in decision making by Governments, planning and regulatory bodies and public sector delivery partners

